



126 W. Commerce Blvd • Slinger, WI • 53086 (262)644-4404
www.technology-usa.net

How to configure Windows Time Server to use an external time source on a Windows 2003/2008:

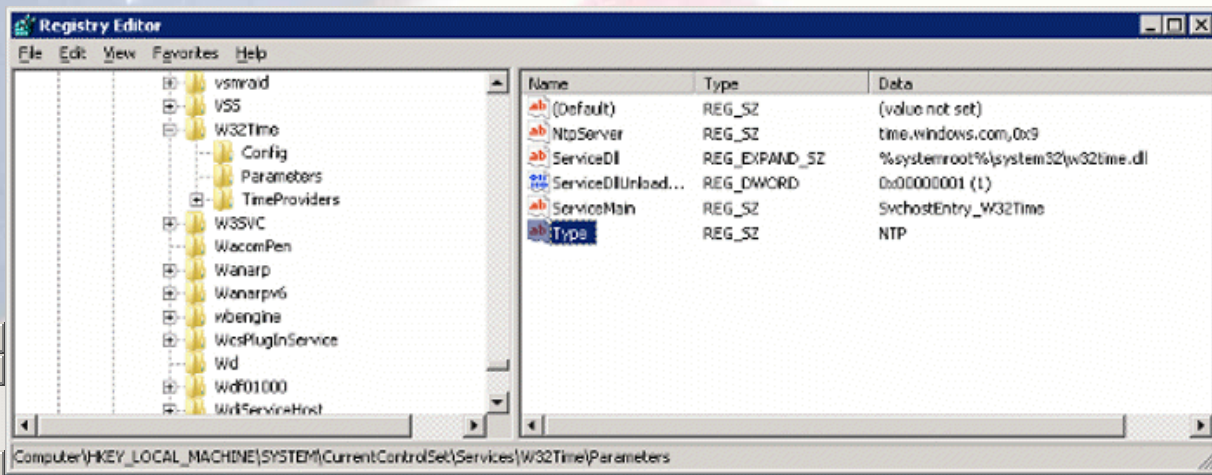
To Windows Time Server to use an external time source on a Windows 2003/2008, please follow these steps:

1. Change the server type to NTP. To do this, follow these steps:

- a. Click **Start**, click **Run**, type **regedit**, and then click **OK**.
- b. Locate and then click the following registry subkey:

HKEY_LOCAL_MACHINE\SYSTEM\CurrentControlSet\Services\W32Time\Parameters\Type

- c. In the right pane, right-click **Type**, and then click **Modify**.
- d. In **Edit Value**, type **NTP** in the **Value data** box, and then click **OK**.



2. Set AnnounceFlags to 5. To do this, follow these steps:

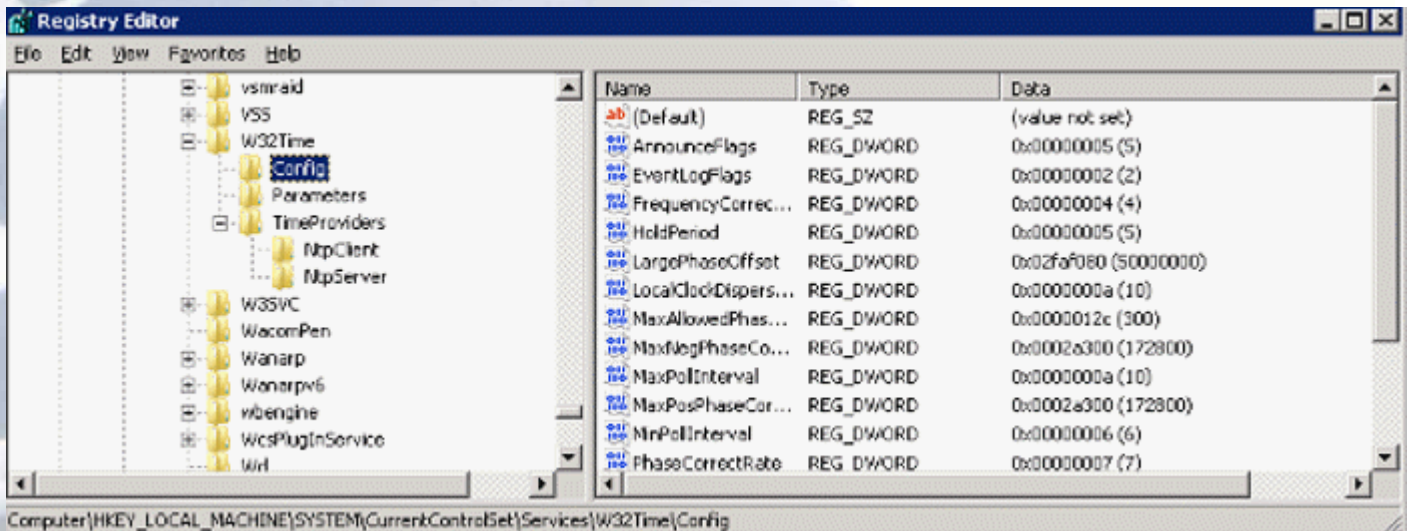
- a. Locate and then click the following registry subkey:

HKEY_LOCAL_MACHINE\SYSTEM\CurrentControlSet\Services\W32Time\Config\AnnounceFlags

- b. In the right pane, right-click **AnnounceFlags**, and then click **Modify**.
- c. In **Edit DWORD Value**, type **5** in the **Value data** box, and then click **OK**.



126 W. Commerce Blvd • Slinger, WI • 53086 (262)644-4404
www.technology-usa.net



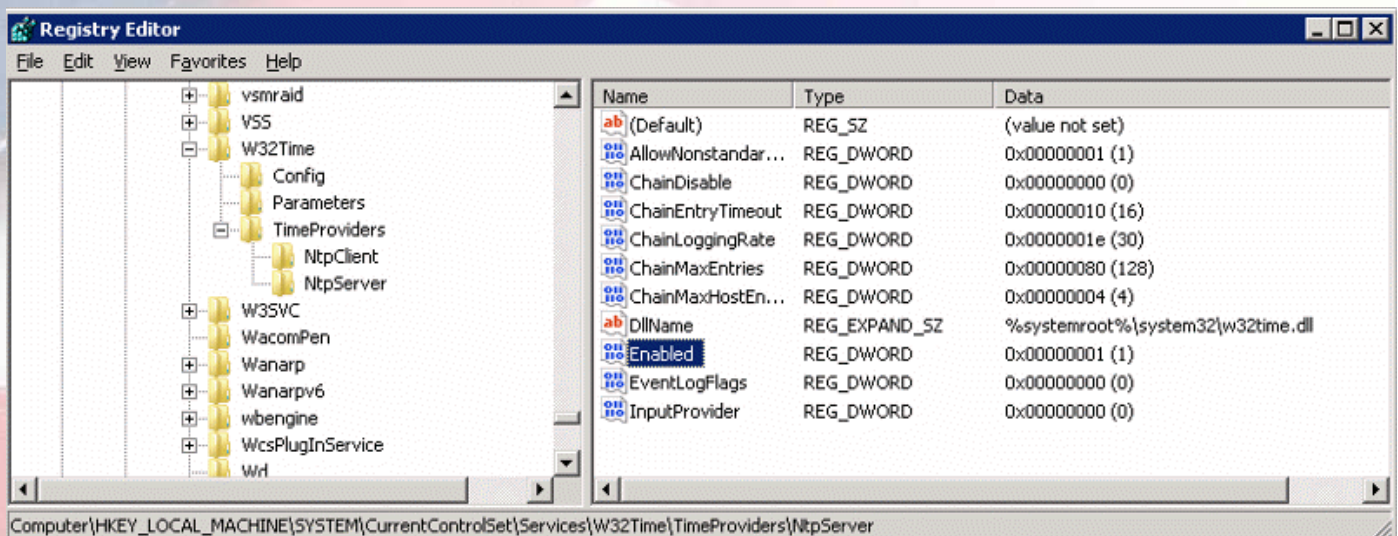
3. Enable NTPServer. To do this, follow these steps:

a. Locate and then click the following registry subkey:

HKEY_LOCAL_MACHINE\SYSTEM\CurrentControlSet\Services\W32Time\TimeProviders\NtpServer

b. In the right pane, right-click **Enabled**, and then click **Modify**.

c. In **Edit DWORD Value**, type **1** in the **Value data** box, and then click **OK**.



4. Specify the time sources. To do this, follow these steps:

a. Locate and then click the following registry subkey:

HKEY_LOCAL_MACHINE\SYSTEM\CurrentControlSet\Services\W32Time\Parameters\NtpServer

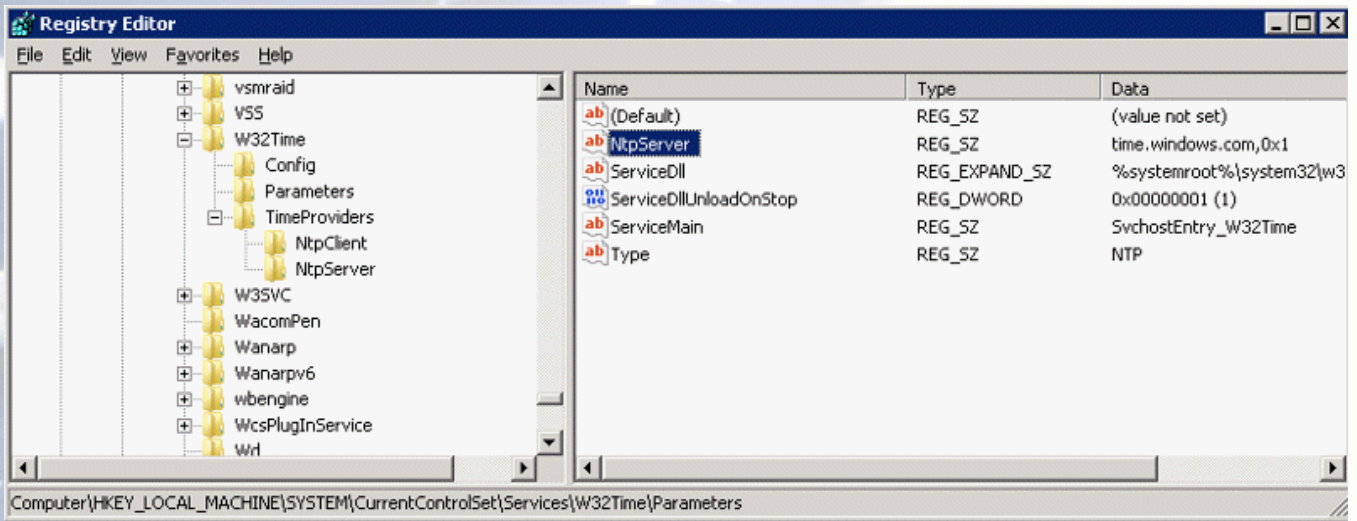
b. In the right pane, right-click **NtpServer**, and then click **Modify**.



126 W. Commerce Blvd • Slinger, WI • 53086 (262)644-4404
www.technology-usa.net

c. In **Edit Value**, type *Peers* in the **Value data** box, for example time.windows.com, and then click **OK**.

Note: each DNS must be unique and you must append 0x1 to the end of each DNS name otherwise changes will not take effect



5. Select the poll interval. To do this, follow these steps:

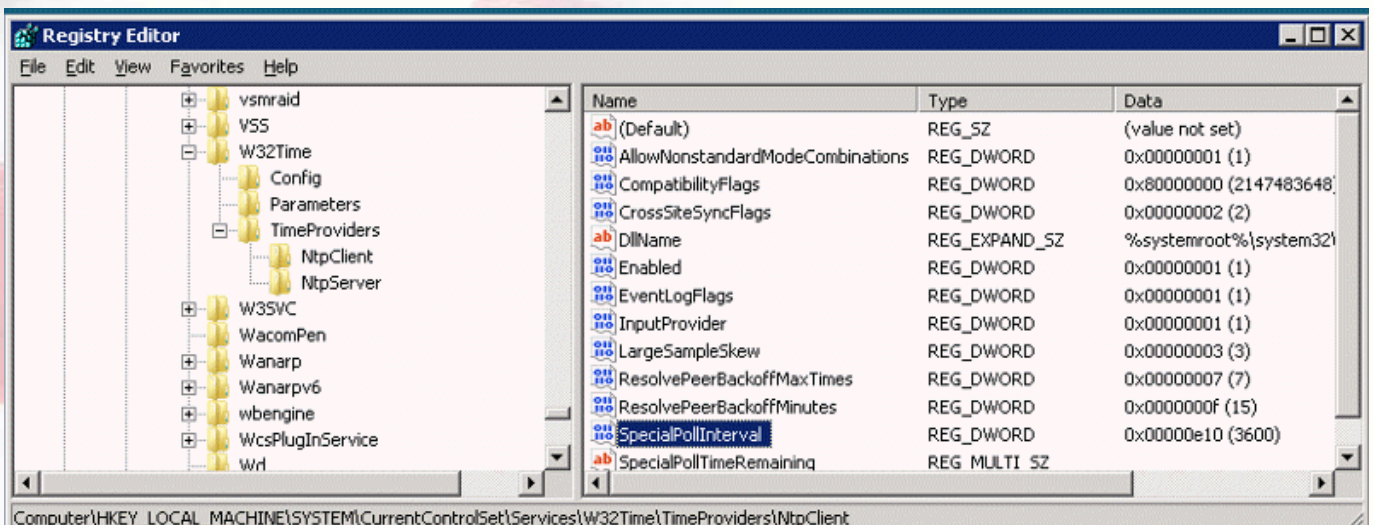
a. Locate and then click the following registry subkey:

HKEY_LOCAL_MACHINE\SYSTEM\CurrentControlSet\Services\W32Time\TimeProviders\NtpClient\SpecialPollInterval

b. In the right pane, right-click **SpecialPollInterval**, and then click **Modify**.

c. In **Edit DWORD Value**, type *TimeInSeconds* in the **Value data** box, for example 3600 Decimal

(60 minutes) and then click **OK**.





126 W. Commerce Blvd • Slinger, WI • 53086 (262)644-4404
www.technology-usa.net

6. Configure the time correction settings. To do this, follow these steps:

a. Locate and then click the following registry subkey:

HKEY_LOCAL_MACHINE\SYSTEM\CurrentControlSet\Services\W32Time\Config\MaxPosPhaseCorrection

b. In the right pane, right-click **MaxPosPhaseCorrection**, and then click **Modify**.

c. In **Edit DWORD Value**, click to select **Decimal** in the **Base** box.

d. In **Edit DWORD Value**, type *TimeInSeconds* in the **Value data** box, for example 3600 (1 hour) and then click **OK**.

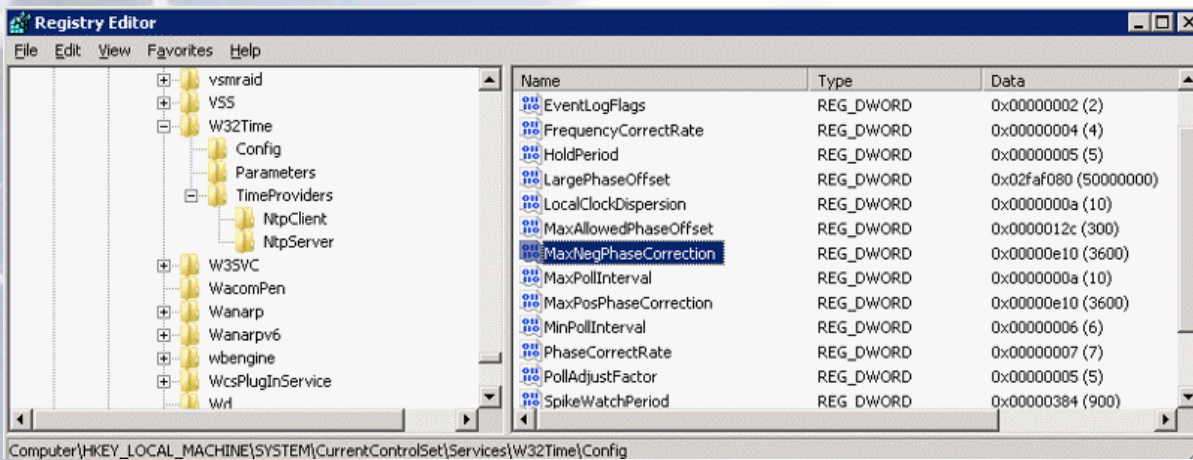
e. Locate and then click the following registry subkey:

HKEY_LOCAL_MACHINE\SYSTEM\CurrentControlSet\Services\W32Time\Config\MaxNegPhaseCorrection

f. In the right pane, right-click **MaxNegPhaseCorrection**, and then click **Modify**.

g. In **Edit DWORD Value**, click to select **Decimal** in the **Base** box.

h. In **Edit DWORD Value**, type *TimeInSeconds* in the **Value data** box, for example, 3600 (1 hour) and then click **OK**.



7. Quit Registry Editor.

8. At the command prompt, type the following command to restart the Windows Time service, and then press ENTER:

```
net stop w32time && net start w32time
```

Note: to test it, execute this command: net time /queryntp