

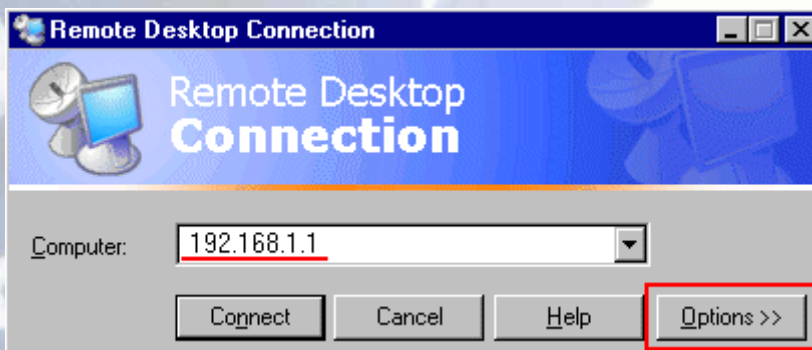
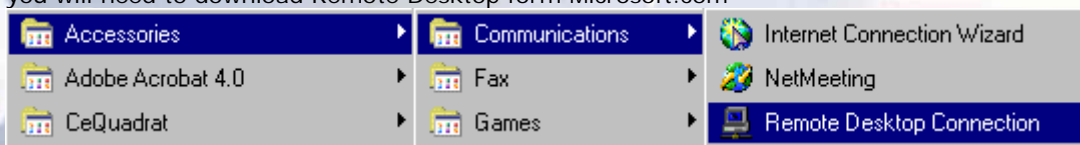


314 Elm Street • Slinger, WI • 53086 (262)644-4404  
[www.technology-usa.net](http://www.technology-usa.net)

## Remote Access To Server

Once the Remote Desktop Client s/w is installed, you can access it via the Windows Start-menu under Accessories / Communications :

Remote desktop comes installed with all Windows XP PCs. If you have a PC other than Windows XP, you will need to download Remote Desktop form Microsoft.com



Enter the name or Public IP-address of the system, to which you like to connect. You should look at the "Options >>" to adjust / optimize your Remote Desktop connection.



314 Elm Street • Slinger, WI • 53086 (262)644-4404  
[www.technology-usa.net](http://www.technology-usa.net)

**Remote Desktop Connection**

**Remote Desktop Connection**

General | Display | Local Resources | Programs | Experience

**Logon settings**

Type the name of the computer, or choose a computer from the drop-down list.

Computer: 192.168.1.1

User name: jhelmig

Password:

Domain: P633\VM

Save my password

**Connection settings**

Save current settings, or open saved connection.

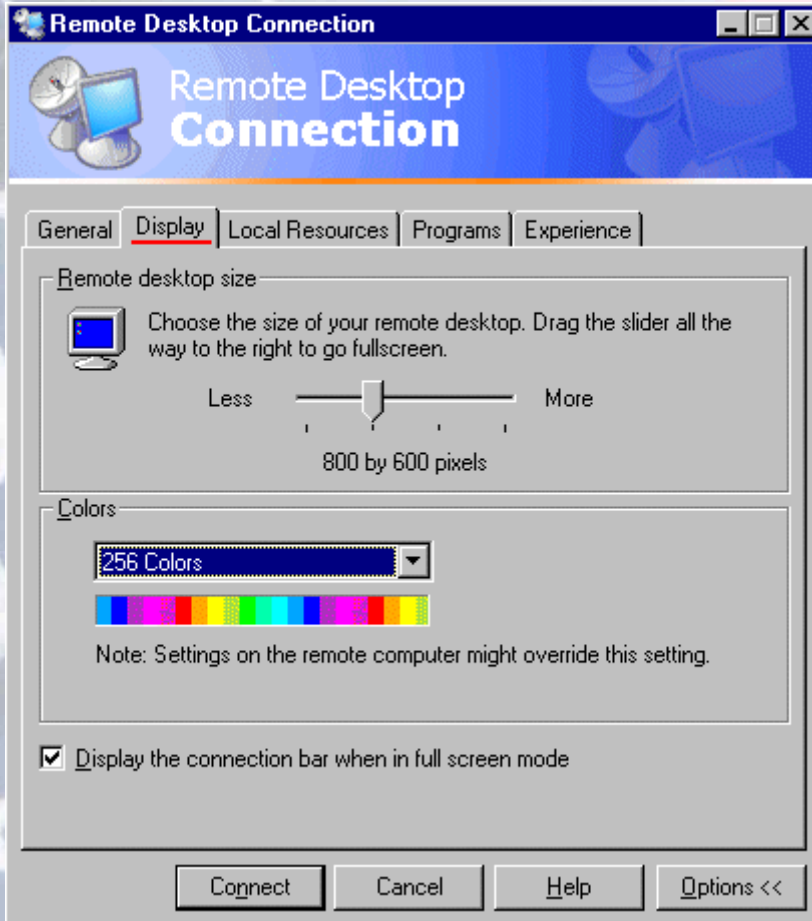
Save As... Open...

Connect Cancel Help Options <<

Tab : General  
You can enter here already the Username and password, to be used to connect to the Windows XP Prof. system.  
To be able to re-use this information on later connections, you can save this configuration values and reuse them via Open.



314 Elm Street • Slinger, WI • 53086 (262)644-4404  
[www.technology-usa.net](http://www.technology-usa.net)

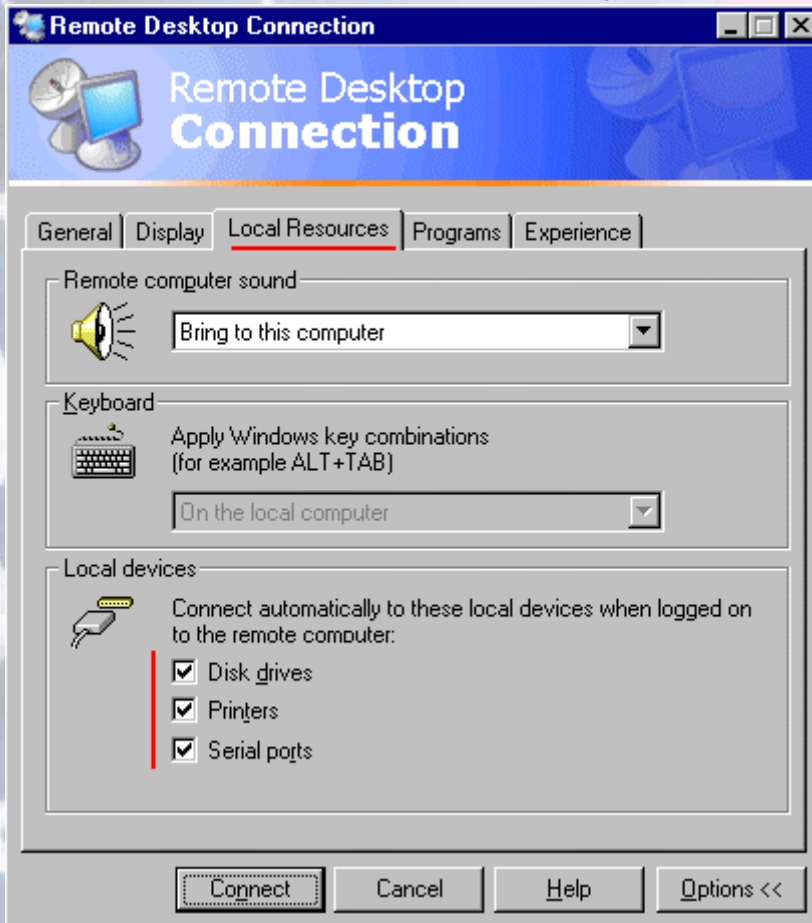


tab : Display

If you are connection via a high-speed LAN network, you will not bother about this, but when connecting via a modem, you can optimize the connection and get a faster response-time by selecting a smaller Remote Desktop size and a lower Color resolution.



314 Elm Street • Slinger, WI • 53086 (262)644-4404  
[www.technology-usa.net](http://www.technology-usa.net)



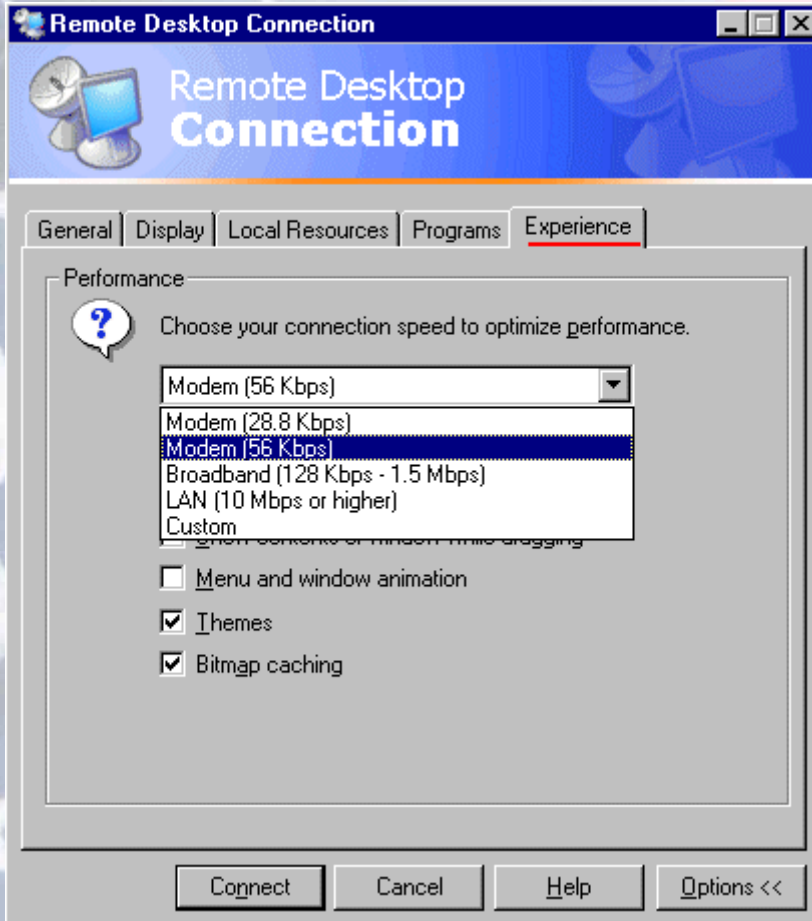
tab : Local Resources

You can configure the transfer of Sound alerts and which of your local devices (from the remote system, where you are right now working on) will be accessible during your Remote Desktop session. More details will follow below.





314 Elm Street • Slinger, WI • 53086 (262)644-4404  
[www.technology-usa.net](http://www.technology-usa.net)

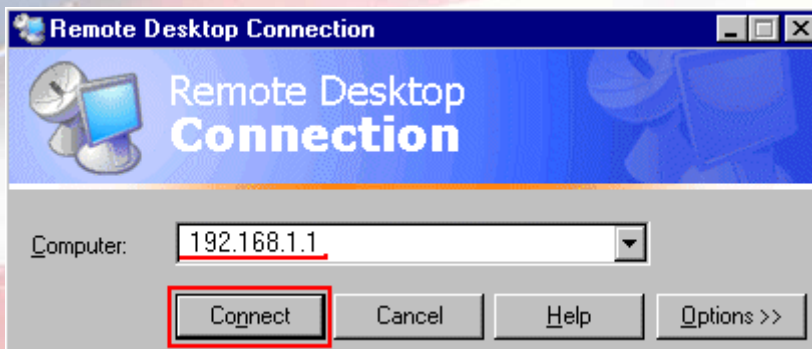


tab : Experience

To help the Remote Desktop s/w to optimize the connection, select the speed of your connection.

You should also de-select all "fancy" features , like : Wallpaper and any animation, because they will only use transmission time.

Once the connection is properly configured, you are ready to Connect :





314 Elm Street • Slinger, WI • 53086 (262)644-4404  
[www.technology-usa.net](http://www.technology-usa.net)



You may get this warning about the access from the Remote computer to your local devices.

You will need to logon to system. Use the same information as you do to log into your PC at work.